

# ICNMDigital

20 – 21 November 2025

---

Identity Graphic **Standards Manual**

# Logo Usage

---

## Standard Version

**ICNMDigital**

**20 - 21 November 2025**

## Horizontal Version

**ICNMDigital** | **20 – 21 November 2025**

## Simplified Version



# Logo Usage: Inverse

Standard Version

**ICNMDigital**

20 – 21 November 2025

Horizontal Version

**ICNMDigital** | 20 – 21 November 2025

Simplified Version



# Logo Usage: Black & White

---

## Standard Version

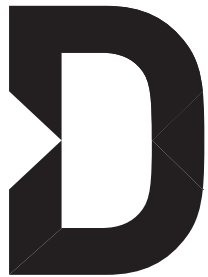
**ICNMDigital**

**20 – 21 November 2025**

## Horizontal Version

**ICNMDigital** | **20 – 21 November 2025**

## Simplified Version



# Colour Palettes

---

## Primary Palettes

**CMYK**  
C75 M41 Y0 K0  
**RGB**  
R63 G132 B197  
**HEX**  
#3F84C5

**PANTONE**  
660C

**CMYK**  
C9 M78 Y54 K0  
**RGB**  
R221 G94 B100  
**HEX**  
#DE5E65

**CMYK**  
C75 M68 Y67 K90  
**RGB**  
R0 G0 B0  
**HEX**  
#000000

## Secondary Palettes

**CMYK**  
C61 M0 Y0 K0  
**RGB**  
R50 G202 B249  
**WEB**  
#32CAF9

**CMYK**  
C49 M61 Y22 K1  
**RGB**  
R142 G112 B149  
**WEB**  
#8E7095

**CMYK**  
C2 M9 Y97 K0  
**RGB**  
R255 G221 B21  
**WEB**  
#FFDD15

**CMYK**  
C43 M16 Y0 K0  
**RGB**  
R140 G185 B227  
**HEX**  
#8CB9E3

**PANTONE**  
278C

**CMYK**  
C95 M84 Y19 K5  
**RGB**  
R47 G69 B132  
**HEX**  
#2F4584

**CMYK**  
C2 M27 Y0 K0  
**RGB**  
R242 G197 B221  
**HEX**  
#F2C5DD

# Typography

---

## Primary Fonts

### DINPro Bold

ABCDEFGHIJKLMNOPQRSTUVWXYZ  
abcdefghijklmnopqrstuvwxyz  
1234567890 &

### DINCond-Medium

ABCDEFGHIJKLMNOPQRSTUVWXYZ  
abcdefghijklmnopqrstuvwxyz  
1234567890 &

### DIN Pro Regular

ABCDEFGHIJKLMNOPQRSTUVWXYZ  
abcdefghijklmnopqrstuvwxyz  
1234567890 &

### DIN Pro Italic

ABCDEFGHIJKLMNOPQRSTUVWXYZ  
abcdefghijklmnopqrstuvwxyz  
1234567890 &

## Web Fonts / Substitutes

### Arial Bold

ABCDEFGHIJKLMNOPQRSTUVWXYZ  
abcdefghijklmnopqrstuvwxyz  
1234567890 &

### Arial Narrow

ABCDEFGHIJKLMNOPQRSTUVWXYZ  
abcdefghijklmnopqrstuvwxyz  
1234567890 &

### Arial Regular

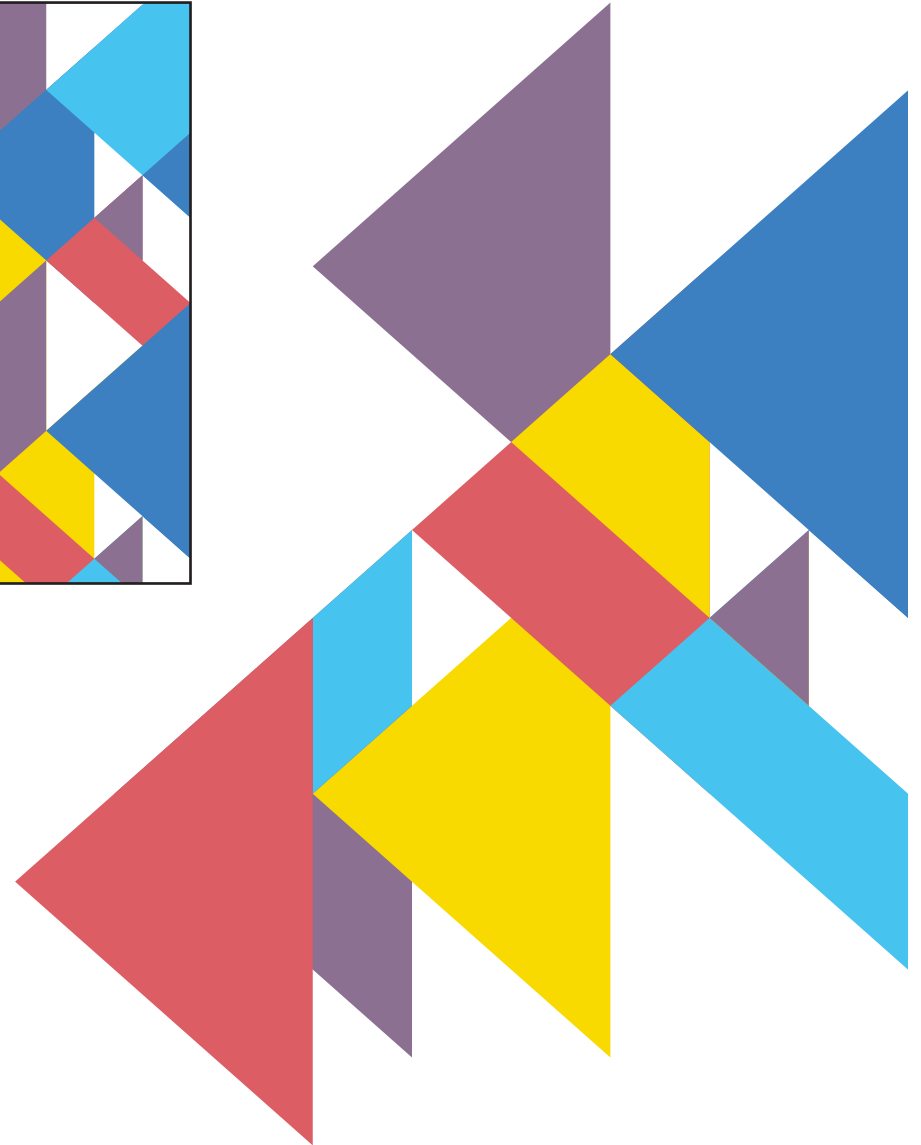
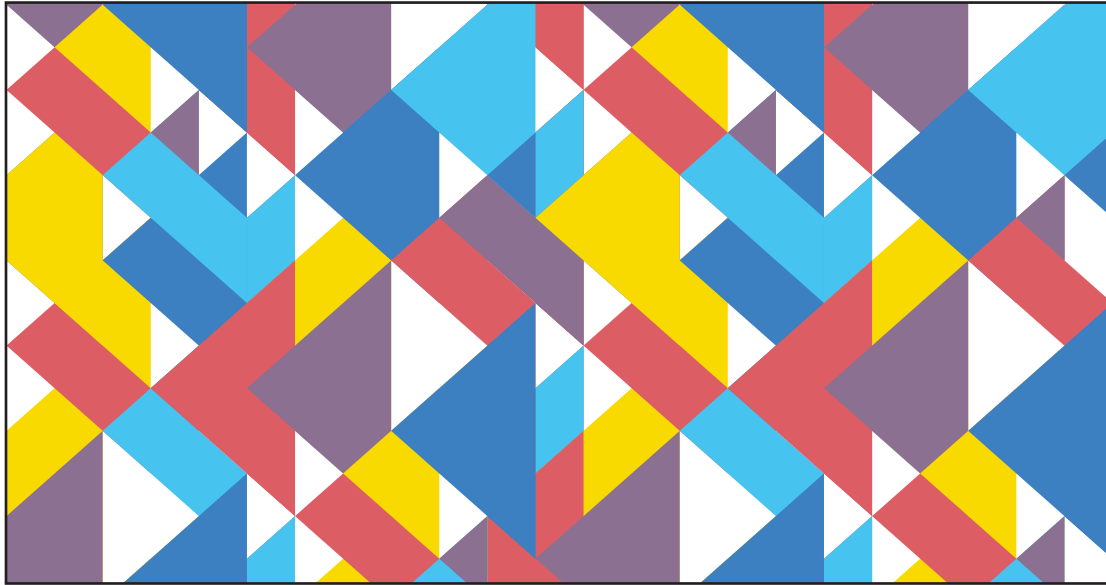
ABCDEFGHIJKLMNOPQRSTUVWXYZ  
abcdefghijklmnopqrstuvwxyz  
1234567890 &

### Arial Italic

ABCDEFGHIJKLMNOPQRSTUVWXYZ  
abcdefghijklmnopqrstuvwxyz  
1234567890 &

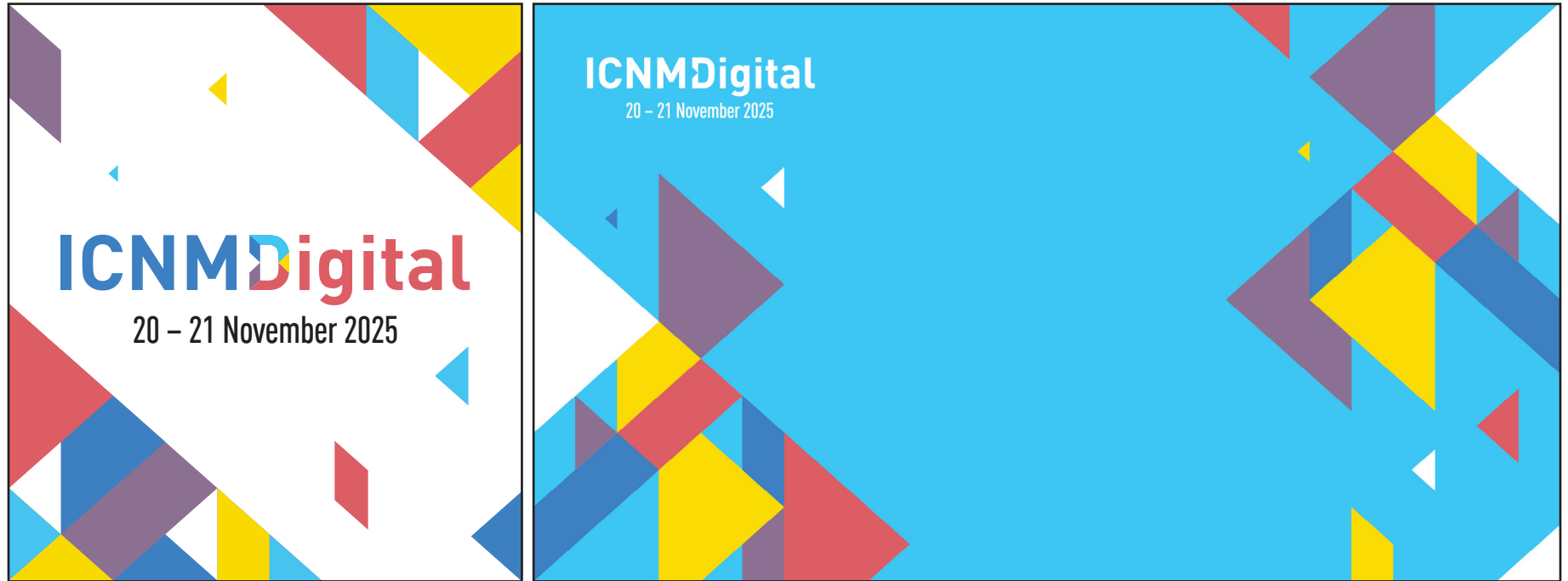
# Supporting Elements

---



# Design Examples

---





# Design Examples

---



## Connect Globally, Explore Neuromuscular Insights at the 2-Day Online Congress

### Key Topics:

- Muscle Diseases
- Peripheral Neuropathies
- Neuromuscular Junction Disorders
- Motor Neuron Diseases

# ICNMDigital

20 – 21 November 2025

[ICNMD.ORG](https://icnmd.org) | [#ICNMDIGITAL](https://twitter.com/ICNMDIGITAL)